



Etching presses comparison

70x100cm paper size.

	LT70	LF70	M70x100	P70x100
Press type	Tabletop	Floor type	Floor type	Floor type
Upper roller diameter	10cm	10cm	15cm	19cm
Lower roller diameter	8cm	8cm	15cm	19cm
Roller type	Solid	Solid	Tube	Tube
Bed width – Rollers length	72cm	72cm	74cm	74cm
Bed travel	112cm	112cm	112cm	116cm
Bed thickness	6mm	6mm	10mm	10mm
Bed cover	-	-	1mm	1mm
Driving roller	Lower	Upper	Upper	Upper
Gear reduction	1:6	1:7	1:12	1:15
Wheel diameter	-	-	60cm	60cm
Crank length	25cm	25cm	-	-
10cm opening (upon request)	No	No	No	Yes
Weight	165kg	210kg	330kg	390kg

These presses are equipped with solid steel or thick walled tube steel rollers, to ensure minimum deformation.

Rollers are supported by oversized, maintenance-free bushings.

All models have a gear reduction unit.

The bed plate is made of high strength steel. It is supported and guided by roller bearings and has elastic stops at the ends.

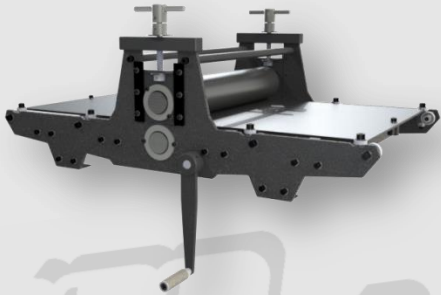
Floor type models are supported by 4 swivel, adjustable height feet.

Tabletop model has 4 mounting holes.

All models are equipped with standard pressure gauges (0.1mm accuracy).

Maximum opening: 4cm.

70x100 Etching Press Comparison



LT Series



LF Series



M Series



P Series

70x100 Etching Press Comparison