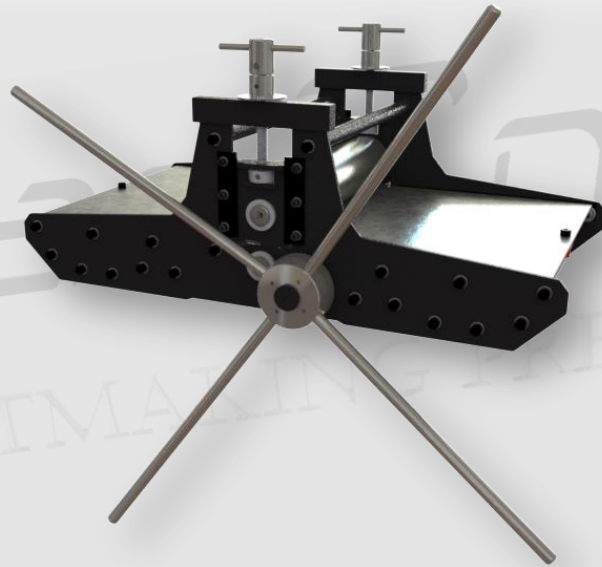




mini Series Etching Presses

Small but powerful.



These presses are equipped with 7,8cm upper rollers, adequate for intaglio printing

Rollers are supported by oversized, maintenance-free bushings.

The wheel is mounted on the lower roller, while it has 4 spokes, 40cm long, to ensure easy and smooth printing.

The bed plate is made of 3cm galvanized steel. It is supported by roller bearings and guided by wear resistant plastic strips, while it has elastic stops at the ends.

Press has 4 mounting holes, so it can be fixed on a bench or table.

Pressure gauges, with 0.1mm accuracy, provide ease of height adjustment when using different materials

Maximum opening: 4cm.

mini Series Etching Presses



Technical Data

	mini25	mini35
Upper Roller Diameter <i>cm</i>	7.8	7.8
Lower Roller Diameter <i>cm</i>	4.8	4.8
Reduction	-	1/2
Bed Plate Thickness <i>mm</i>	3	3
Bed Plate Width <i>cm</i>	27,5	38
Bed Plate Travel <i>cm</i>	45	61
Max Opening <i>cm</i>	4	4
Weight approx. <i>kg</i>	32	45

Dimensions (cm)

4xØ10.5mm mounting holes, at HLxHW cm

	mini25	mini35
L	57	74
W	42	56
H	7.2	8.9
TL	99	131
TH	31-35	33-37
PL	54	70
PW	27.5	38
BL	49	63
BW	29.5	40
HL	42	49.8
HW	23.9	34.4