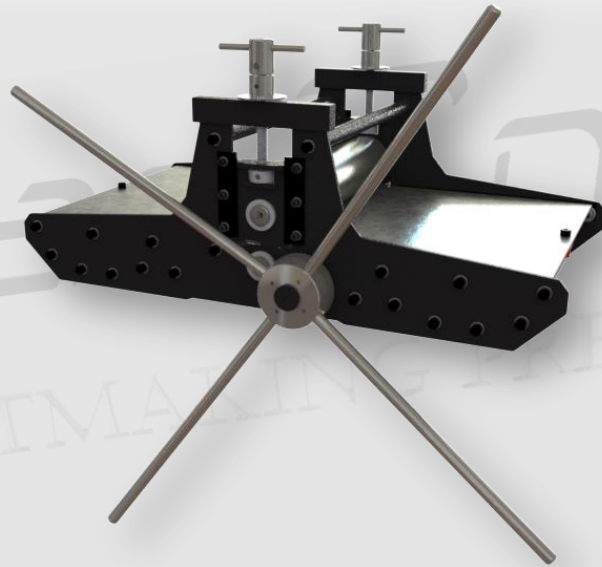




mini Series Etching Presses

Small but powerful.



These presses are equipped with 3.1 inches upper rollers, adequate for intaglio printing.

Rollers are supported by oversized, maintenance-free bushings.

The wheel is mounted on the lower roller, while it has 4 spokes, 15 ³/₄" long, to ensure easy and smooth printing.

The bed plate is made of 0.12 inches galvanized steel. It is supported by roller bearings and guided by wear resistant plastic strips, while it has elastic stops at the ends.

Press has 4 mounting holes, so it can be fixed on a bench or table.

Pressure gauges, with 0.1mm accuracy, provide ease of height adjustment when using different materials

Maximum opening: 1.6 inches.

mini Series Etching Presses



Technical Data

	mini25	mini35
Upper Roller Diameter <i>inch</i>	3.1	3.1
Lower Roller Diameter <i>inch</i>	1.9	1.9
Reduction	-	1/2
Bed Plate Thickness <i>inch</i>	0.12	0.12
Bed Plate Width <i>inch</i>	10.8	15
Bed Plate Travel <i>inch</i>	17.7	24
Max Opening <i>inch</i>	1.6	1.6
Weight approx. <i>lbs</i>	71	100

Dimensions (inch)

4xØ0.4in mounting holes, at HLxHW in

	mini25	mini35
L	22.4	29.1
W	16.5	22
H	2.8	3.5
TL	39	51.6
TH	12.2-13.8	13-14.6
PL	21.3	27.6
PW	10.8	15
BL	19.3	24.8
BW	11.6	15.7
HL	16.5	19.6
HW	9.4	13.5