



## Etching presses comparison

70x100cm (27.6x39.4 inches) paper size.

	LT70	LF70	M50x70	P50x70
<b>Press type</b>	Tabletop	Floor type	Floor type	Floor type
<b>Upper roller diameter</b>	3.9 inch	3.9 inch	5.9 inch	7.5 inch
<b>Lower roller diameter</b>	3.1 inch	3.1 inch	5.9 inch	7.5 inch
<b>Roller type</b>	Solid	Solid	Tube	Tube
<b>Bed width – Rollers length</b>	28.3 inch	28.3 inch	29.1 inch	29.1 inch
<b>Bed travel</b>	44.1 inch	44.1 inch	44.1 inch	45.7 inch
<b>Bed thickness</b>	0.24 inch	0.24 inch	0.39 inch	.39 inch
<b>Bed cover</b>	-	-	0.04 inch	0.04 inch
<b>Driving roller</b>	Lower	Upper	Upper	Upper
<b>Gear reduction</b>	1:4	1:5	1:9	1:12
<b>Wheel diameter</b>	-	-	23.6 inch	23.6 inch
<b>Crank length</b>	9.8 inch	9.8 inch	-	-
<b>3.9 inch opening (upon request)</b>	No	No	No	Yes
<b>Weight</b>	364 lbs	463 lbs	728 lbs	860 lbs

These presses are equipped with solid steel or thick walled tube steel rollers, to ensure minimum deformation.

Rollers are supported by oversized, maintenance-free bushings.

All models have a gear reduction unit.

The bed plate is made of high strength steel. It is supported and guided by roller bearings and has elastic stops at the ends.

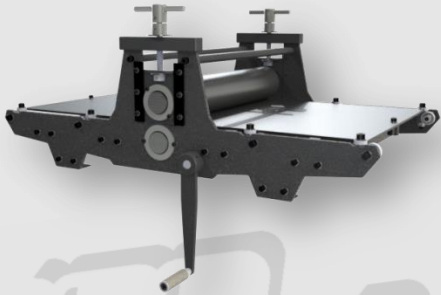
Floor type models are supported by 4 swivel, adjustable height feet.

Tabletop model has 4 mounting holes.

All models are equipped with standard pressure gauges (0.1mm accuracy).

Maximum opening: 1.6 inches.

### 70x100 Etching Press Comparison



LT Series



LF Series



M Series



P Series

## 70x100 Etching Press Comparison